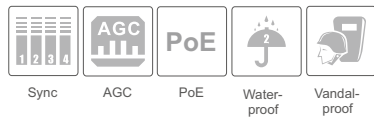


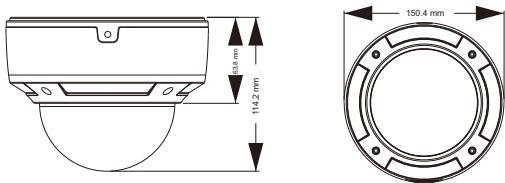
2 MP Network Water-proof Dome Camera



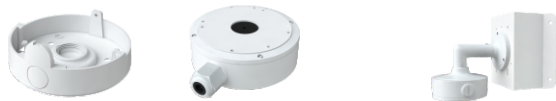
Features

- 1080P (1920 × 1080) full real time coding
- Max. resolution: 1920 × 1080
- ICR auto switch, true day / night
- 20 ~ 30m IR night view distance optional
- 3D DNR, physical WDR
- Smart analysis including object removal, line crossing detection and intrusion detection, etc.
- ROI coding
- Support CVBS video output and two-way audio
- PoE power supply
- Support hardware reset
- Support smart phone, iPad, remote monitoring
- Support P2P
- IP66 & IK10 ingress protection
- Support three streams

Dimensions



Available Accessories



TD-YXH0204 TD-YXH0303 TD-YXH0303+TD-YZJ0408+TD-YZJ0601



TD-YXH0303+TD-YZJ0408+TD-YZJ0501 TD-YXH0303+TD-YZJ0812

Specifications

Specifications	Model	TD-9523E2
Camera		
Image Sensor		1 / 2.7 "CMOS
Image Size		1920 × 1080
Electronic Shutter		1 / 25 s ~ 1 / 100000 s
Iris Type		Fixed Iris
Min. Illumination		0.05 lux @F1.2,AGC ON; 0 lux with IR
		Color : 0.05 lux @F1.2,AGC ON; B / W : 0.01 lux @F1.2,AGC ON
Lens		2.8 ~ 12 mm @F1.4, horizontal field of view : 109.8° ~ 38.5°
Lens Mount		Φ14
Day & Night		ICR
Wide Dynamic Range		120dB
Digital NR		3D DNR
Angle Adjustment		Pan : 0°~360°, Tilt : 0°~77°, Rotation : 0°~360°
Image		
Video Compression		H.265 / H.264 / MJPEG
H.265 Compression Standard		Main Profile @Leve4.1 High Tier
Resolution		1080P (1920×1080), 720P (1280×720), D1, CIF, 480×240
Main Stream		60Hz : 1080P (1 ~ 30fps) / 720P (1 ~ 30fps) 50Hz : 1080P (1 ~ 25fps) / 720P (1 ~ 25fps)
Bit Rate		128 Kbps ~ 6 Mbps
Bit Rate Type		VBR / CBR
Quality		Five levels under VBR; Freely adjustable under CBR
Image Settings		ROI, Saturation, Brightness, Chroma, Contrast, Wide Dynamic, Sharpen, NR, etc. adjustable through client software or web browser
ROI		Each ROI to be configured separately
Interfaces		
Network		RJ45
Audio		MIC IN × 1, MIC OUT × 1
Video Output		CVBS video output (BNC × 1)
Storage Card		Up to 128GB
RS485		Yes
Alarm Input		1 CH
Alarm Output		1 CH
Functions		
Remote Monitoring		IE browsing, CMS remote control
Online Connection		Support simultaneous monitoring for up to 4 users; Support multi-stream real time transmission
Network Protocol		TCP / IP, UDP, DHCP, NTP, RTSP, PPPoE, DDNS, SMTP, FTP
interface Protocol		ONVIF, GB-T / 28181 - 2011
Storage		Local storage, network remote storage
Smart Alarm		Motion alarm, sensor alarm
Smart Analysis		Object removal detection, line crossing detection and intrusion detection, etc.
PTZ		RS485 × 1
PoE		Yes
IR Distance		20 ~ 30 m optional
Ingress Protection		IP66, IK10
Others		
Power Supply		DC12V / AC24V / PoE
Power Consumption		< 2W
IR Consumption ON		< 5W
Operating Environment		- 20 °C ~ 50 °C, 10 % ~ 90 % relative humidity
Dimensions (mm)		Φ150 × 114
Weight (net)		1025g
Installation		Pendent mounting (Wall mounting available with the junction box and bracket)

Available Model

Available Model	TD-9523E2 (D / AZ / PE / IR2)
	TD-9523E2 (D / AZ / PE)